

USER MANUAL



ET-44W English V1.4

INTRODUCTION

ET-44W thermostat is a high-quality thermostat with minimalist design. It is designed to accurately control the floor temperature, with a maximum load of 3600W/16A. The biggest feature is that it is compatible with Schneider Unica series, Legrand Valena series and many frames with an inner size of 56*56mm, such as Schneider Exxact. Also you can operate this thermostat through the APP. It is more convenient.

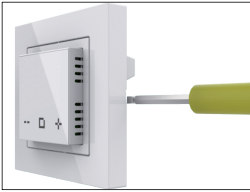
NOTE: For the first use, you need to enter advanced Settings to set the load power (Ref.function and operation code: 09).
0: 2900~3600W 1: 1800~2900W 2: 0~1800W

TECHNICAL PARAMETER

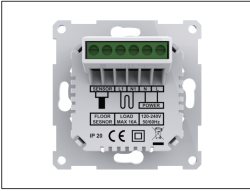
Voltage: 120~240Vac 50/60Hz
Max Load: 16A (Resistive load)
Wiring specification: ≤2.5mm²
Standby power: < 1W
IP Class: IP21
Floor temperature limit protection: 30 °C

INSTALLATION

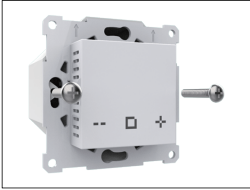
Step 1: Use a flat-blade screwdriver to separate the frame and adapter from the thermostat as shown in the figure.



Step 2: Connect the corresponding circuit as shown in the figure.

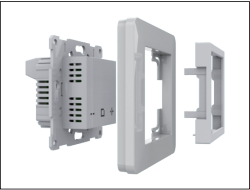


Step 3: Use the mounting screws to fix the thermostat in the mounting box.

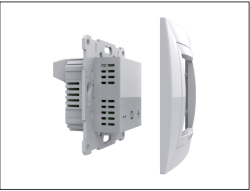


Step 4: Install the frame and adapter into the thermostat.

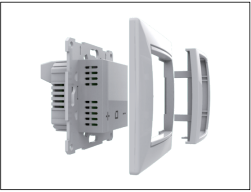
If you use a frame with an inner dimension of 56*56mm, such as Schneider Exxact, install the frame and the adapter into the thermostat as shown in the figure below.



If using Schneider Unica series frame, install the frame and adapter into the thermostat as shown in the figure below.

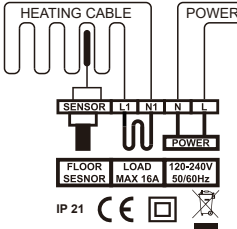


If using Legrand Valena series frame, install the frame and adapter into the thermostat as shown in the figure below.

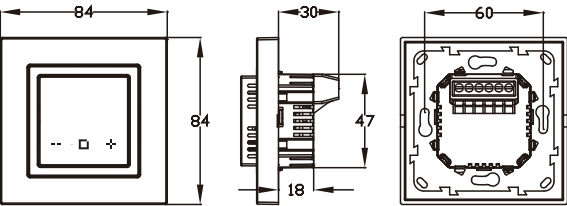


WIRING INSTRUCTION

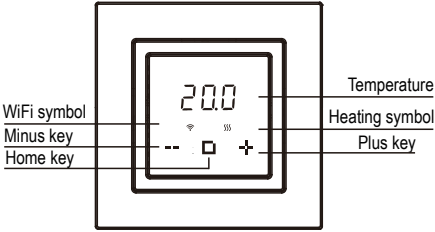
L/N: Connect for power cable.
L1/N1: Connect for heating cable.
Sensor: Connect for floor sensor.
Suggestion: Please keep the max load around 90% of 16A to prolong the lifetime.



DIMENSION(MM)



SYMBOLS



WIFI CONNECTION

Step 1: Scan the QR code or download the Warmme from APP store/ Google browser.
Step 2: Register and log in with email address in the APP.
Attention: Read and agree 'Privacy Policy and Service agreement' before registration.
Step 3: Click 'Add Device' or '+' on the top-right to add device.
Step 4: Click 'WiFi thermostat'.
Step 5: If the WIFI icon flash quickly, Click 'Press to connect'.
Step 6: Enter Wifi password, and click 'Confirm'.
Step 7: If device added successfully, you can change the device name and set region. Then, click 'Done'.
Attention: If failed, confirm the Wifi is 2.4G version and check the Wifi signals, then, use the 'AP mode' in the top right to connect again.
Step 8: You can check the actual temperature and set temperature etc. at the control interface.
Note: If the WIFI is not stable, the thermostat may be disconnected. If so, please press + and - simultaneously for three seconds to make the WiFi signal flash quickly and reconnect to the Internet. The mode will be switched to Hold mode automatically when the thermostat is disconnected.



FUNCTION AND OPERATION

1.On/Off
This thermostat can switch on and off.
Setting method:
A. Turn on
After the thermostat is awakened, press and hold the Home key for 3 seconds to turn it on.
B. Turn off
After the thermostat is awakened, when the floor temperature is displayed, press and hold the Home key for 3 seconds to shut down. When the anti-freeze protection function is turned on, the thermostat will maintain the floor temperature at 5°C in the shutdown state.

2. Mode option
Three mode is available:
Auto mode: Thermostat change the setting temperature automatically through the Edit datas located in APP. It is weekly schedule.
Hold mode: The thermostat will maintain the hold temperature.
Holiday mode: In holiday mode, the thermostat will maintain the holiday temperature until the holiday time ends and then back to auto mode.
Setting method:
Press the Home key to get the working mode.
Press + or - to get the new mode.
Select Auto mode and then press Home key to display floor temperature.
Select Hold mode and then press home key to display the hold temperature. And then press + or - to set hold temperature. Press

home to display floor temperature.
Select Holiday mode and then press home key to display holiday days-00d. After that, press + or – to set the days. Press Home to display holiday temperature. And then press + or – to set holiday temperature. Press home to display floor temperature.

3. Set the temperature

After the user sets the temperature, the thermostat keeps the floor temperature at the set temperature. After power off, power on again, the original set temperature will be retained and executed. Setting range of this thermostat is 5-40°C.

Setting method:
After the thermostat is awakened, press the +/- key to change the set temperature.
Press Home key to return to display the floor temperature.

4. Key lock

After the user sets the temperature, if children or the elderly do not want to operate the thermostat by mistake, you can set a key lock for the thermostat. After power off, power on again, the key lock still exists and continue to execute.
Setting method:
After the thermostat is awakened, long press the - button for 3 seconds, the interface flashes LoC, that is, the setting is successful. After the thermostat is awakened, press the - button for 3 seconds, the interface displays the floor temperature, and the key lock is cancelled.

5. Advanced Settings

In order to fit more applications, this thermostat provides a number of special functions. Some functions are embedded in the thermostat, and some functions are embedded in the APP.

Below is advance setting embeded in the thermostat:

No.	Name	Default	Range
01	Anti-frozen Function	OFF	ON/OFF
02	Sensor Type	0	0: 3950 10K 1: 3700 10K 2: 3600 12K 3: 3380 10K 4: 3450 15K
03	Standby Brightness	1	0/1/2/3/4/5/6/7/8
04	Open Windows	OFF	ON/OFF
05	Adaptive Function	OFF	ON/OFF
06	Sensor Application	1	0:Room 1:Floor 2:Both
07	Floor Temperature Calibration	0.0	-5.0°C -- 5.0°C
08	Room Temperature Calibration	0.0	-5.0°C -- 5.0°C
09	Load power selection	1	0:2900W-3600W 1:1800W-2900W 2:0W-1800W
10	Reset	NO	NO/YES

Function explanation:

01. Anti-frozen Function
This function is suitable for winter and cold seasons. When the user forgets to turn on the thermostat, it can avoid freezing the plants due to the low room temperature. After turning on this function, the floor temperature is maintained at 5°C when the thermostat is off.

Setting method:
a. After the thermostat is awakened, press and hold the Home and + keys at the same time for 3 seconds, and the interface displays 01.
b. Press Home key to enter setting.
c. Press - or + key to select ON or OFF.
d. Press Home key to confirm, and the interface displays 02.
Note: If you want to exit Advanced Settings, wait 10 seconds or after all Reset parameters are set, the temperature screen is displayed.

02. Sensor Type

This function is used to replace the old temperature controller. When the parameters of the old floor sensor are similar to the parameters of a certain model shown in the table below, there is no need to replace the floor sensor. Just select the right floor sensor model here.

Tempe- rature	The resistance value of the floor sensor at the corresponding temperature point (Ω)				
	0:3950 10k	1:3700 10K	2:3600 12K	3:3380 10K	4:3450 15K
0°C	32800	30286	34423	26050	41900
10°C	19733	19055	22217	17630	27281
20°C	12419	12320	14660	12040	18205
30°C	7905	8165	9869	8331	12427

Setting method:
a. After the thermostat is awakened, press and hold the Home and + keys at the same time for 3 seconds, and the interface displays 01.
b. Press + key to select 02.
c. Press Home key to enter setting.
d. Press - or + key to select the sensor type.
e. Press Home key to confirm, and the interface displays 03.

03. Standby brightness

In order to meet the brightness requirements of different applications, this thermostat provides a standby brightness adjustment function. If the thermostat is installed in the bedroom, in order to avoid the brightness produced by the thermostat at night from affecting sleep, the brightness can be adjusted to 0 (completely off) or 1 (minimum brightness).

Setting method:
a. After the thermostat is awakened, press and hold the Home and + keys at the same time for 3 seconds, and the interface displays 01.
b. Press + key to select 03.
c. Press Home key to enter setting.
d. Press - or + key to select the brightness.
e. Press Home key to confirm, and the interface displays 04.

04. Open Windows

The thermostat detects a drop in temperature caused by opening a window.Turn off the heat temporarily to save energy.

Setting method:

a. After the thermostat is awakened, press and hold the Home and +keys at the same time for 3 seconds, and the interface displays 01.
b. Press + key to select 04.
c. Press Home key to enter setting.
d. Press - or + key to select ON or OFF.
e. Press Home key to confirm, and the interface displays 05.

05. Adaptive Function

The adaptive function ensures that the desired temperature value is reached in advance when the next weekly program event is execut-ed.
Setting method:
a. After the thermostat is awakened, press and hold the Home and +keys at the same time for 3 seconds, and the interface displays 01.
b. Press + key to select 05.
c. Press Home key to enter setting.
d. Press - or + key to select select ON or OFF.
e. Press Home key to confirm, and the interface displays 06.

06. Sensor Application

Used to select the sensor to work.
Setting method:
a. After the thermostat is awakened, press and hold the Home and +keys at the same time for 3 seconds, and the interface displays 01.
b. Press + key to select 06.
c. Press Home key to enter setting.
d. Press - or + key to select 0 or 1 or 2.
e. Press Home key to confirm, and the interface displays 07.

07/08. Floor /Room Temperature Calibration

This function allows the user to correct the floor/room sensor error. Example: In the same environment, the actual temperature is 20°C, and the thermostat displays 21°C. Then set this parameter to -1.0°C.
Setting method:
a. After the thermostat is awakened, press and hold the Home and +keys at the same time for 3 seconds, and the interface displays 01.
b. Press + key to select 07.
c. Press Home key to enter setting.
d. Press - or + key to select the difference value.
e. Press Home key to confirm,08 Perform the same operation.
f. Press Home key to confirm, and the interface displays 09.

09.Load power selection

Due to the power of the floor heating, the heat generated by the temperature controller itself is different, thus affecting the tempera-ture value detected by the room sensor. The program can make corresponding correction and compensation for the detection value according to different power.
Setting method:
a. After the thermostat is awakened, press and hold the Home and +keys at the same time for 3 seconds, and the interface displays 01.
b. Press + key to select 09.
c. Press Home key to enter setting.
d. Press - or + key to select the Load power serial number.
e. Press Home key to confirm.
10.Reset
This function restores the parameters of the set temperature and advanced settings to the factory default parameters.

Below is advance setting embeded in the APP:

No.	Name		Default	Range
1	Sensor Selection		Floor Sensor	Room Sensor Floor Sensor Both Sensors
2	Room Temp Calibration		0.0°C	-5.0 ~ 5.0°C
3	Floor Temp Calibration		0.0°C	-5.0 ~ 5.0°C
4	Temp Tolerance		1.0°C	0.5/1.0/2.0/3.0°C
5	°C/°F		°C	°C/°F
6	Floor Temp Limit		30.0°C	20.0 ~ 50.0°C
7	Adaptive Function		OFF	ON/OFF
8	Schedule		5+1+1	7/5+1+1
9	Edit Setting			
10	Energy	Power Set	0W	0~4500W
	Use	Energy Use	-	-
11	Factory Reset		-	-

4.Temp Tolerance
When the value is 1°C. The thermostat start to work when the actual temp is 1°C lower than set temp and stop to work when the actual temp is 1°C higher than set temp.

6.Floor Temp Limit
If you choose both sensors, floor temp limit must be set to protect floor.

8.Schedule
Select a weekly schedule for the Edit. There are 2 options:
7: each day from Mon to Sun can be set individually.
5+1+1: 5 days from Mon to Fri have the same events, Sat and Sun can be set individually.
Default Parameters :

Day	Wake	Leave	Back	Sleep
Mon-Fri	07:00 22.0°C	08:30 19.0°C	17:00 22.0°C	22:00 19.0°C
Sat/Sun	08:00 22.0°C	08:30 22.0°C	17:00 22.0°C	22:00 19.0°C

9.Edit Setting
Edit Settings allows you to modify the time and temperature in the table above. If you choose auto mode. The thermostat operates according to user-modified parameters.

10.Energy Use
This option allows you to enter the various data used to calculate energy use. Then use this information to calculate electricity consumption.

TROUBLESHOOTING

Note: When a fault alarm occurs, please contact professional technicians for repair or replacement.
E1:Room sensor failure alarm.
E2: Floor sensor failure alarm.